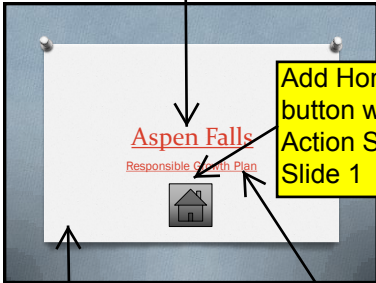
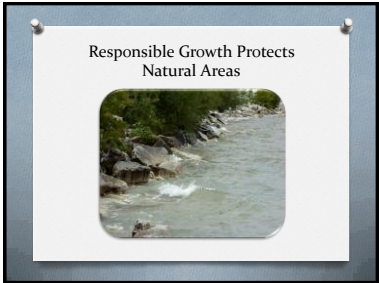


Hyperlink *Aspen Falls*, on Slide 1, to California Housing web page

1. Insert video from file on Slide 2  
2. Check electronic file



Add Home Action button with an Action Setting to Slide 1

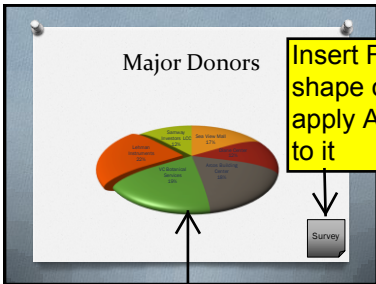


Insert video from ClipArt gallery on Slide 1

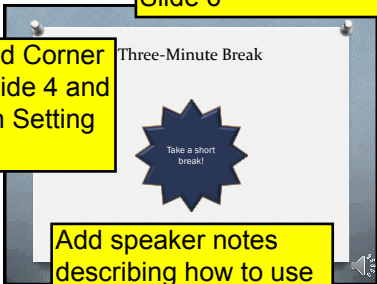
Modify video settings - play automatically, rewind and add border

Hyperlink *Responsible Growth Plan*, on Slide 1, to p06\_Growth\_Guidelines

Create a Timed Break Slide 6



Insert Folded Corner shape on Slide 4 and apply Action Setting to it



Add speaker notes describing how to use the Action Settings to Slide 5



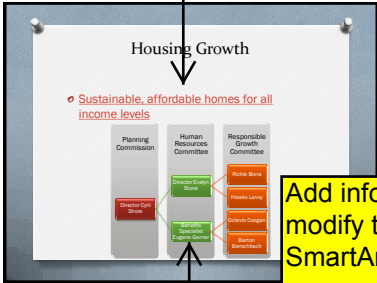
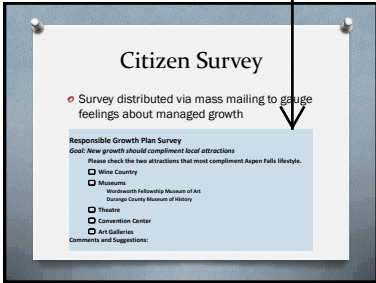
Insert a sound from Media Clips group on Slide 6

Create a new Slide 3 and add properly formatted chart from p06\_Growth\_Donors

Insert a new Slide 4 and use Paste Special to paste link to Lastname\_Firstname\_p06\_Growth Survey

Remove hyperlink on Slide 5

Add clipart with a Washout effect to Slide 8



Add information and modify the design of SmartArt



Insert a new Slide 8 and add a SmartArt graphic

Add file name to the footer on Notes and Handouts page