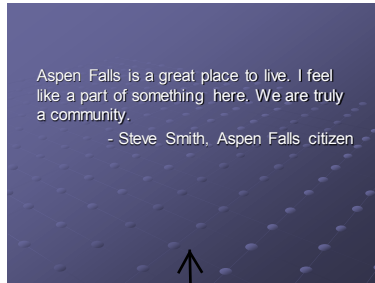
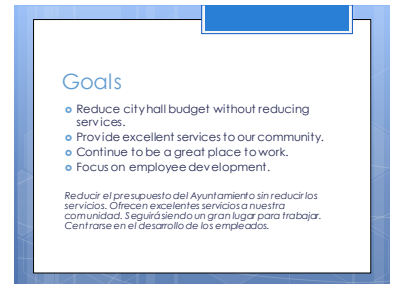
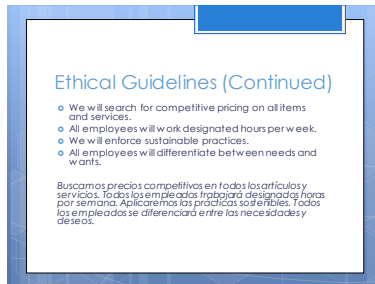
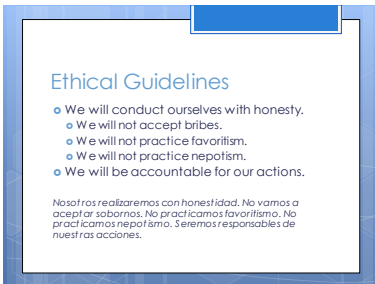
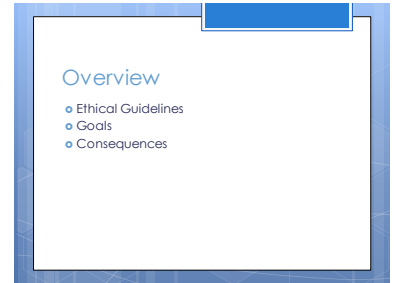


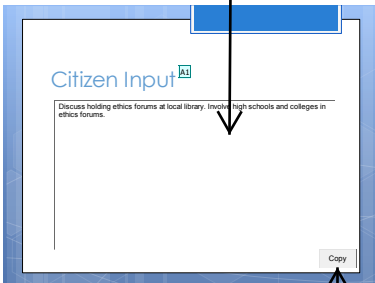
1. Set "2010Success!" as password for presentation.
2. Add a digital signature to the presentation.
3. Submit as directed.



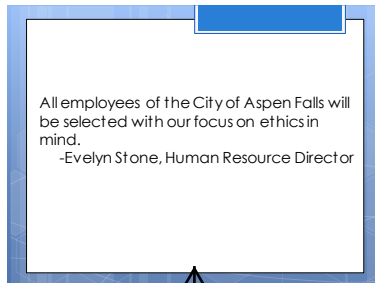
Import a slide from PowerPoint 2002, position as Slide 2.



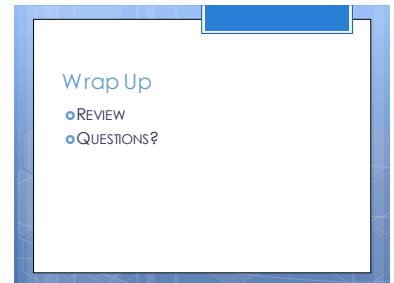
1. Create Citizen Input slide and add Active X control.
2. Create a macro on Citizen Input slide.



Create a working VBA statement.



Import a slide from other presentation software and position as Slide 8.



Add and edit comments on Slides 1 and 6

### Slide 1

---

**A2** Should we change this to City Government Ethical Guidelines?  
Author, 6/22/2010

### Slide 7

---

**A1** Presenters will need to be trained on how to use this text box and macro  
Author, 6/22/2010